

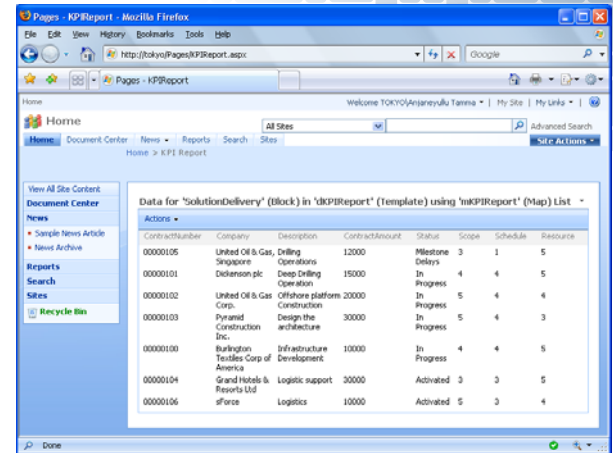
Extend Microsoft Office SharePoint Server 2007's Connectivity

Stone Bond Technologies brings an unparalleled level of compatibility and connectivity to SharePoint Server 2007. SharePoint's Business Data Catalog (BDC) enables portal web parts to include data from external LOB applications, allowing SharePoint to be the focal point of all data consumption and analysis of enterprise-wide information. The success of such an initiative in any organization rests in the ability to connect all of the mission-critical data sources to the BDC.

Stone Bond's .NET based integration software automates the otherwise manpower-intensive activities necessary to interact with external information, including building the BDC metadata. Stone Bond's software supports a combination of Extract-Transform-Load (ETL) and Enterprise Application Integration (EAI) technologies, with an integration engine that extends the reach of the SharePoint installation far beyond the default capabilities of the BDC. This eliminates the need for a staging database and virtually eliminates any custom code. Stone Bond's federated query capability allows SharePoint to search, index and report from a variety of sources and define relationships across system boundaries, bi-directionally.

Benefits

- Ability to move and align data to and from virtually any source without programming
- Greatly simplifies data handling into and out of applications built on SharePoint.
- Greatly reduce development and subsequent maintenance time and cost
- Deliver a seamless and transparent deployment into the SharePoint environment
- Ability to select data from SharePoint Lists and map to and from virtually any corporate or niche application
- Eliminate customization or intrusive modifications to the SharePoint portal platform
- Provide a secure, Auditable, 100% .NET-based environment for connectivity to SharePoint
- Automatically generate BDC metadata
- Create virtual relationships across disparate sources
- Implement semantic alignment and transformation of data from unlikely sources
- Configure inbound and outbound integration to conform to most standards for data formats, encryption, packaging, and transport



Provides otherwise unsupported capabilities:

- Data transformation
- Data filtering
- Defining and automating bi-directional integration with SharePoint lists
- Conditional integration from disparate sources
- Combining and aligning of information from multiple sources
- Utilize virtual relationships across applications
- Hosted applications (Software as a Service –SaaS)

Powered by Enterprise Enabler®

Quickly get up and running using data from and passing data to and from hundreds of business applications like Oracle, SAP, Salesforce.com and other SaaS, SOAP, custom applications, and even electronic instruments.

Partial list of supported integrations:

Microsoft Dynamics	IBM DB2	AS/400	Salesforce.com
SQL	Oracle	OLE	ODBC
ADO Persistent XML	UDL	Custom	Oracle E-Business Suite
OSisoft PI	IHS SubPUMP	OPC Data	PIMS
Advisor	SAP R3/Netweaver	EDI	IBM WebSphere
MSMQ	TIBCO Messages	Peachtree	Microsoft Office Excel
Intuit Quick Books	Sybase	XML*	Microsoft Office Access
HL7	EDI	Delimited Text	DBase

*Including any standard such as WITSML, PIDX, etc.